

Solar Energy Monitoring Software

Energy Monitoring Software (EnergyMon) is application software to monitor the solar energy which is produced and consumed in the field of Electric Power Generations. This software can be used to record and monitor electric power, energy and CO₂. It can transfer data to Cloud, Shared or Main server database in online and offline mode.



Transactions

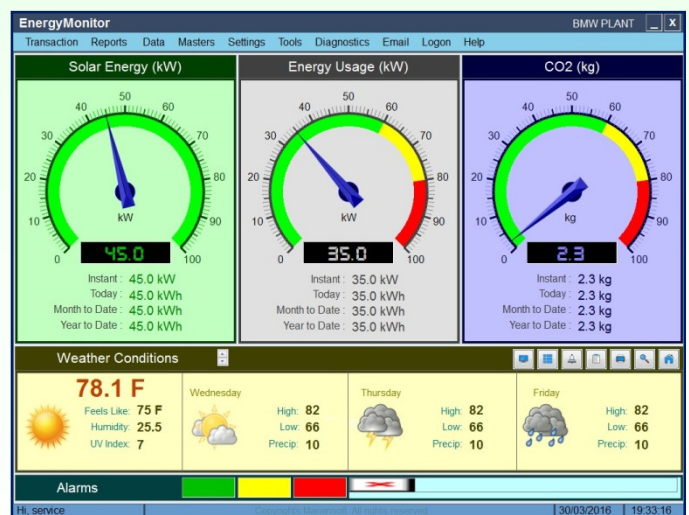
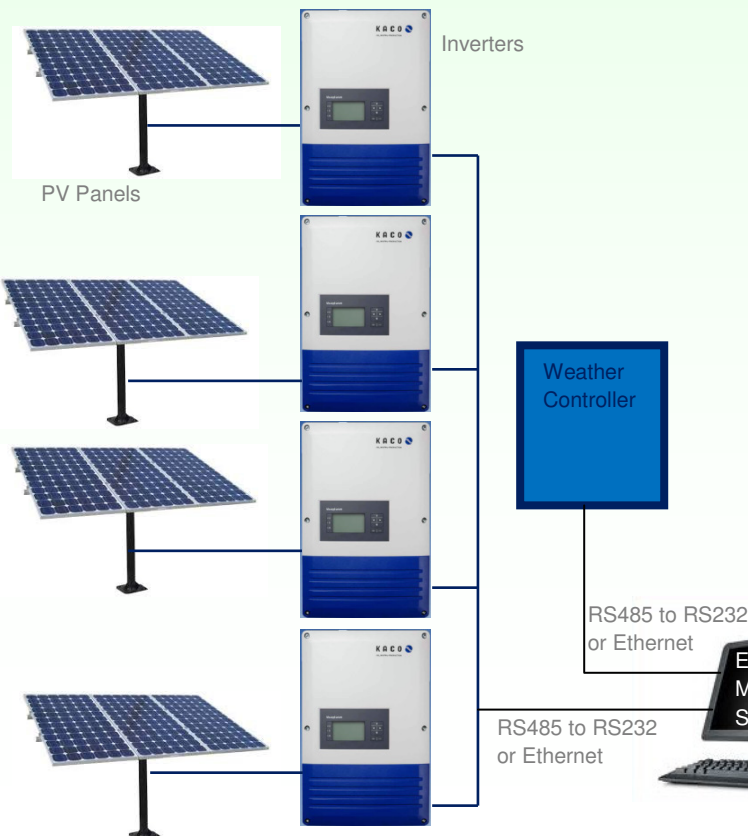
- ✓ Solar Energy Monitoring
- ✓ Inverter Monitoring
- ✓ Graphical Monitoring

Reports Generation

- ✓ Solar Energy Report
- ✓ Alarm Reports
- ✓ Substation wise report
- ✓ Inverter wise report
- ✓ Report from Cloud

Data Management

- ✓ Watchdesk - to monitor the data at office
- ✓ Reprint Slip
- ✓ Data Upload to Server
- ✓ Backup data
- ✓ Delete Data
- ✓ Search Data
- ✓ FTP Transfer



Technical Features

- ✓ Auto storage of solar energy data
- ✓ User privilege for software security
- ✓ Integrate with any Inverter via RS232/RS485 or Ethernet using Modbus Protocol
- ✓ Integrate with Weather Controller via RS232/RS485 or Ethernet using Modbus Protocol
- ✓ Internal storage of transaction data
- ✓ Integrated with any printer
- ✓ Report conversion to required format
- ✓ Data store in Text or XML file for ERP/SAP
- ✓ Report from Cloud Server
- ✓ Data Uploading to Cloud Server
- ✓ Data transferring to Centralized System
- ✓ Customization of Slips / Report Format
- ✓ Smooth operation, even behind firm walls
- ✓ Simple to install and use
- ✓ Much more than competitively priced
- ✓ Data over the LAN, WAN, Internet

Printing

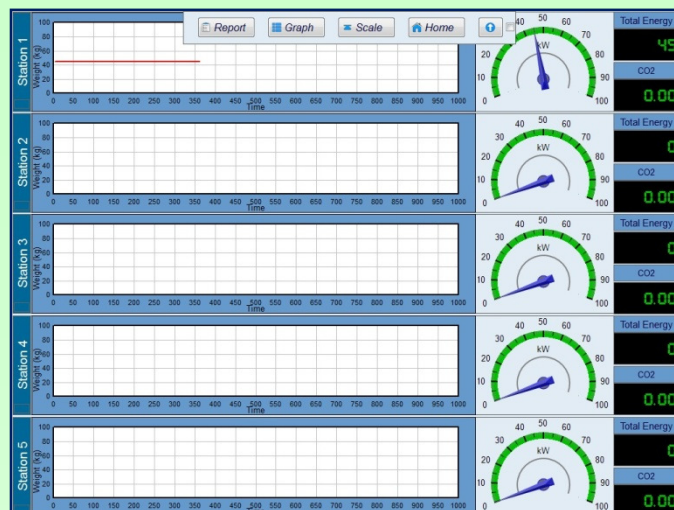
- ✓ Windows or DOS Printing
- ✓ Print consolidated energy tickets
- ✓ Print Barcode Label
- ✓ Printing on Standard or Formatted Slip
- ✓ Printing on Preprinted Slip
- ✓ No. of copies to be Print

Data to Server

- ✓ Data to SQL Server, Oracle or MySQL
- ✓ Unique Ticket No. for every transaction
- ✓ Ticket No. prefix with Station Code
- ✓ Status of data in client when no connectivity
- ✓ Resend data when the Server reconnects
- ✓ Data to Cloud Server

System Minimum Requirements

- ✓ Windows 32 or 64 bit Operating System
- ✓ Intel Core Duo (or higher)
- ✓ 1GB RAM
- ✓ 60GB Hard Disk
- ✓ 15" CRT/TFT/LCD Monitor
- ✓ DVD ROM
- ✓ 2 Nos. of Ethernet Port
- ✓ 2 Nos. of USB Port
- ✓ Optimized for 1024 x 768 pixels displays



Master Management

- ✓ User Master
- ✓ Shift Master
- ✓ Substation Master
- ✓ Inventory Master
- ✓ Customer Master
- ✓ Supplier Master

Settings (and Hardware Integrations)

- ✓ Inverter Communication
- ✓ Weather Controller
- ✓ Solar Capacity Setting
- ✓ Graph Setting, Time for auto data storage
- ✓ SMS Setting
- ✓ SMTP Setting
- ✓ FTP Setting
- ✓ Text & XML Setting
- ✓ Printer setting
- ✓ Privilege Setting

Tools

- ✓ Change Password
- ✓ Change Theme
- ✓ Change Company
- ✓ System Configuration
- ✓ Server Configuration
- ✓ Station Configuration
- ✓ Reset Ticket No.

Diagnostics and Emailing

- ✓ Inverter Checking
- ✓ Weather Controller Checking
- ✓ System Report
- ✓ Settings Report
- ✓ Compose Email with Attachment
- ✓ Address Book