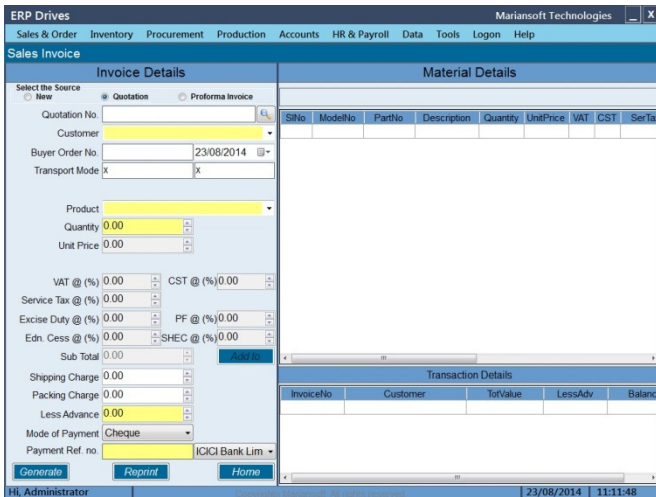
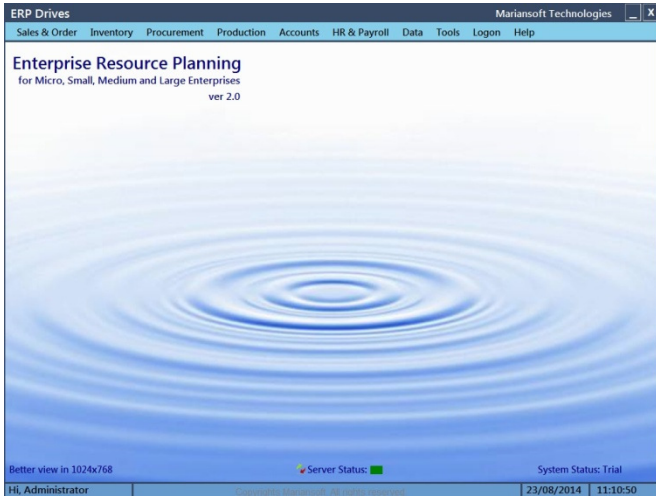
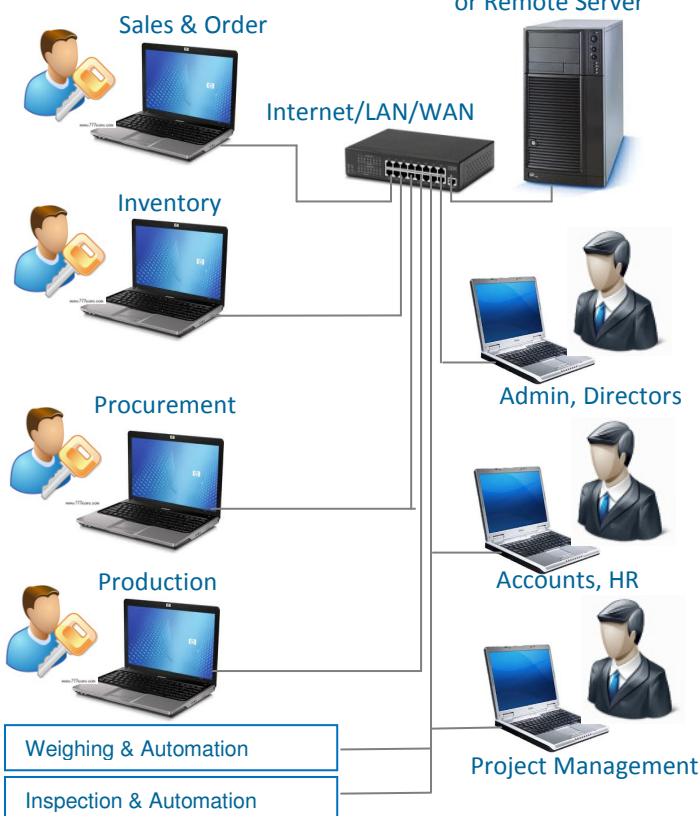


## Enterprise Resource Planning

ERP Drives is Enterprise Resource Planning software for Micro, Medium, Small and Large Enterprise to operate their business in the field of Manufacturing, Trading, Mining and Textiles. This system consists of Sales & Order, Inventory, Procurement, Production, Accounts, HR & Payroll, Project Management, Weighing & Management and Tools to manage the application. ERP Drives provides an integrated real-time view of core business processes, using common databases maintained by a database management system. ERP Drives systems track business resources—cash, raw materials, production capacity—and the status of business commitments: orders, purchase orders, and payroll.



Database in Local Server or Remote Server



### Sales & Order

- Customer Definition
- Quoting & Estimating
- Order Booking
- Invoicing, Sales, Proforma Invoice
- Available to Promise
- RMA Processing
- Product Configuration
- Service Level Monitor
- Route Accounting
- Sales Reports

### Inventory

- Product Definition
- Inventory Replenishment
- Material Allocation
- Item Re-allocation
- Warranty Tracking
- Lot Traceability
- Delivery Challan Declaration
- Inventory Reports

### Procurement

- Vendor Definition
- Purchase Requisition
- Purchase Order
- Import Management
- Vendor Rebates
- Procurement Reports

### Production

- Bill of Material
- Production Plan
- Item Production
- Material Packing List, Routine Maintenance
- Production Reports

# ERP Drives

YOUR BUSINESS

ERP Drives Mariansoft Technologies

Sales & Order Inventory Procurement Production Accounts HR & Payroll Data Tools Logon Help

Purchase Order

Supplier Details

Select the Source  
 New  Purchase Request  Search

Supplier Name: \_\_\_\_\_  
 Quotation No: X 23/08/2014

Product: \_\_\_\_\_  
 Quantity: 0.00 No.  
 Unit Price: 0.00  
 VAT @ (%): 0.00 CST @ (%): 0.00  
 Service Tax @ (%): 0.00  
 Excise Duty @ (%): 0.00 PF @ (%): 0.00  
 Edn. Cess @ (%): 0.00 SHEC @ (%): 0.00

Sub Total: 0.00 **Add to**

Shipping Charge: 0.00  
 Packing Charge: 0.00  
 Less Advance: 0.00  
 Mode of Payment: Cheque  
 Payment Ref. No: \_\_\_\_\_ ICI Bank Limit  
 Terms: X

**Generate Reprint Home**

Purchase Request Materials

S/No	Model/No	Part/No	Description	Quantity	Unit/Price	VAT	CST	EDuty

Hi, Administrator | 23/08/2014 | 11:13:35

ERP Drives Mariansoft Technologies

Sales & Order Inventory Procurement Production Accounts HR & Payroll Data Tools Logon Help

General Ledger

Ledger Details

Select the Type  
 Advance  Later Entry  Search

Bill No: X  
 Date: 23/08/2014  
 Purpose: X  
 Represents: \_\_\_\_\_  
 Relates to: \_\_\_\_\_  
 Remarks: X  
 Payment Mode: Cheque  
 Payment Ref. No: \_\_\_\_\_ ICI Bank Limit

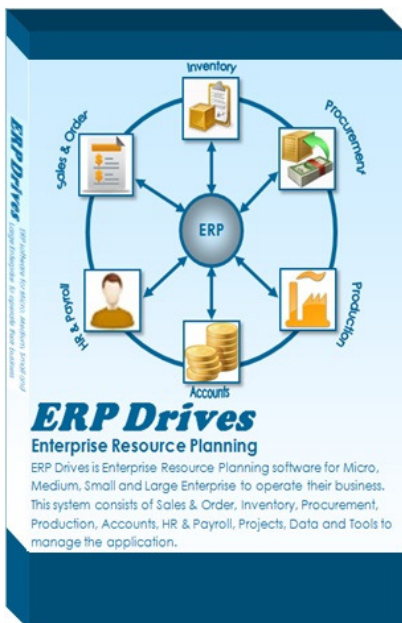
Bill Amount: 0.00  
 Tax: 0.00  
 Total Amount: 0.00  
 Advanced Paid: 0.00  
 Bal. to Company: 0.00  
 Bal. to Represents: 0.00

**Generate Report Reprint Home**

Transaction Details

RefNo	BillNo	Purpose	Represents	Relates	Date

Hi, Administrator | 23/08/2014 | 11:13:04



## Accounts

General Ledger, Voucher, Receipt  
 Accounts Receivable  
 Outstanding Payments  
 Accounts Payable  
 Cost Accounting  
 Bank Management, Bank Account Master  
 Tax Management  
 Finance Reports, Trial Balance  
 Balance Sheet, Income Statement

## HR & Payroll

Employee Definition  
 Payroll, Appointment Letter, Pay Slip, Report  
 Attendants Management  
 Leave Management  
 Resource Master, Resource Utilization

## Data

Project Management  
 Project Planning, Material Allocation  
 User Master, Shift Master  
 Weighing & Automation (for Mining & Logistics)  
 Weighment (works in offline & online)  
 Weight Report  
 Weight Indicator  
 IO Settings, RFID Settings  
 Camera Settings, Image Capturing  
 Vehicle Master, Entry and Exit  
 Source Master  
 Destination Master  
 Fabric Inspection & Automation (for Textiles)  
 Inward, Dispatching  
 Fabric Inspection by 4 point method  
 Defect Master  
 Measuring Controller Setting  
 Tour Statement, Compose Email

## Tools

Change Password  
 Change Company  
 Reset Document Number  
 SMTP Settings  
 Privilege Settings  
 Server Configuration

### Server Minimum Requirements

Windows Server 2003/2008 Operating System  
 Intel Core Processor (or higher)  
 SQL Server 2005/2008 (or higher)  
 HDD: 500 GB  
 RAM: 2 GB

### System Minimum Requirements

Windows 32 or 64 bit Operating System  
 Intel Core Duo (or higher)  
 1GB RAM  
 60GB Hard Disk  
 15" CRT/TFT/LCD Monitor  
 DVD ROM  
 Optimized for 1024 x 768 pixels displays

Process Flow Diagram

